

# PUMPTRONICS PUMPING SYSTEMS

## THE GOLF COURSE WATER MANAGEMENT SPECIALISTS

### An Experienced Company with Knowledgeable Staff

- Provide quality advice and efficient pumping systems to over 200 golf and turf operations in North America.
- Pumptronics understands the total water management needs of golf courses and other turf applications.
- The staff has many years of collective golf course and water management experience and keeps current on the latest technologies and product innovations.
- Our knowledgeable staff recommends the right solution that best fits our customer's needs and budget.
- Pumptronics provides a complete range of products and services, from pump maintenance and service, to VFD panel upgrades, to brand new pre-fabricated pump stations.

### Satisfied Customers

Pumptronics has installed systems at many fine courses across Canada such as:

- St. Georges Golf and Country Club
- Old Ashburn Golf Club
- Summit Golf and Country Club
- Carnmoney Golf and Country Club
- Cataraqui Golf and Curling Club
- Eagles Glen Golf Club

A complete list of completed projects is available upon request

### A Full Product Line

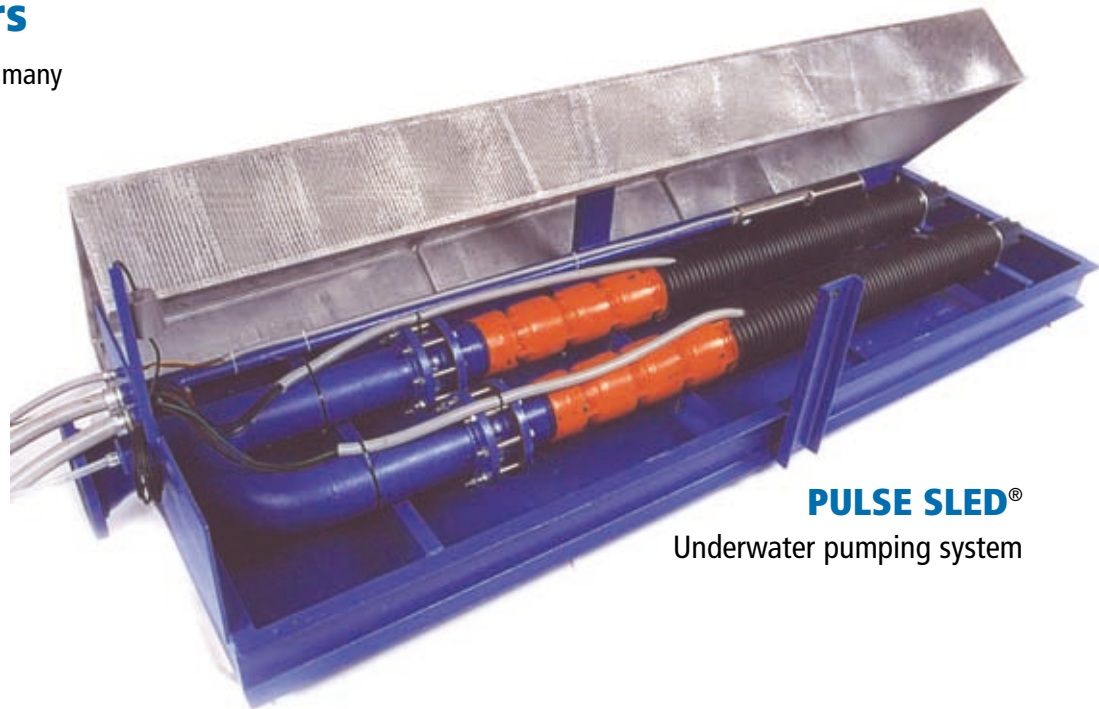
- Pumptronics offers five product lines; Pulse Pro, Pulse, Pulse Sled, Pulse Pak and Pulse Custom; designed to deliver the best solution for any application.

### PULSE SLED®

The **Pulse Sled®** is a maintenance free, underwater pumping system.

Practical Applications:

1. When a wet well cannot be installed
2. To overcome flooding conditions
3. In noise sensitive areas
4. When budget restraints exist



**PULSE SLED®**  
Underwater pumping system



Toll Free 1-888-222-6676 Tel (905) 469-6444 Fax (905) 825-8139  
18-1290 Speers Road, Oakville, Ontario L6L 2X4  
[www.pumptronics.ca](http://www.pumptronics.ca)



# PULSE SLED® FEATURES

## DESIGN CRITERIA

- Submersible turbine pumps
- Pump efficiencies from 72 to 80%, motor efficiencies up to 87%
- Flow Rates from 200-2000 gpm (12 to 125 l/s)
- Pressures from 50-175 psi (350 -1200 Kpa)

## Voltage

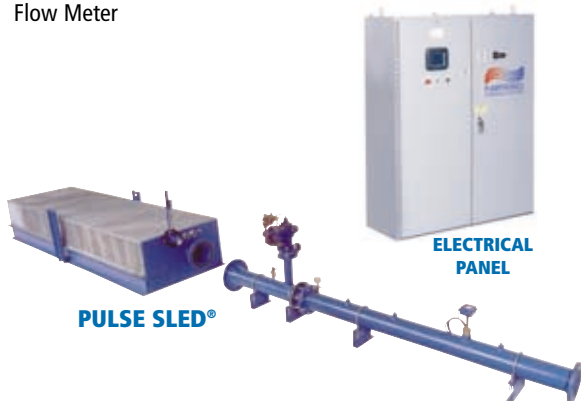
- Available in 230/460/600 volt 3-phase
- Available in single phase 230/460 up to 1500 usgpm

## Quality Electronic Controls

- CSA and UL approved
- Variable frequency drive (VFD) for smooth and efficient operation
- Operator interface with easy to read menu options and system information
- Hydro approved ground fault protection
- 250 psi rated stainless steel pressure transducers
- Internally mounted VFD with external air cooling feature for building temperatures up to 135 degrees F.
- Input line reactor to reduce voltage spikes
- Output line conditioner to perfect motor harmonics
- Control power disconnect switch with safety interlock
- Fused motor protection rated for 200,000 A.I.C.
- All motors and panels are colour coded to eliminate any wiring phase installation errors
- Low discharge pressure shutdown with user defined retries
- High discharge pressure shutdown with user defined retries
- Low water level shutdown with user defined retries
- VFD fault safety shutdown with user defined retries
- Motor phase failure, phase imbalance and low voltage protection
- Surge and lightning protection
- Individual motor start counters
- Individual run time monitoring
- Automatic pump alternation
- First out fault indication
- Automatic ramp increases pressure at user defined rate (default 1 psi every 3 seconds)
- Last 32 faults displayed with time and date of event

## Options Available

Flow Meter

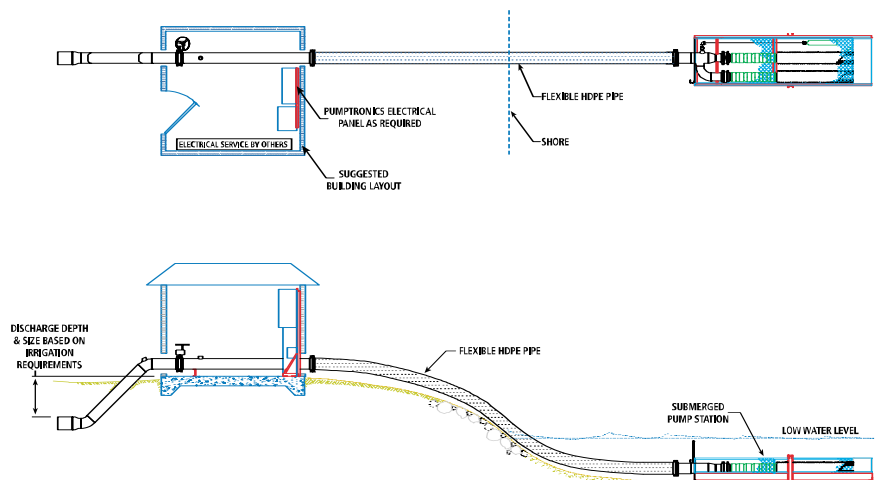


## Quality Construction

- Fabricated steel sled with MOF approved galvanized screening
- 2 high efficiency 3600 RPM submersible turbine pumps with cast iron bowls, bronze impellers, stainless steel shafting, water lubricated bearings and stainless steel strainer
- VFD rated Franklin submersible motors
- Pressure maintenance pump with oversized motor to eliminate motor overloading at low pressures
- Automatic VFD transfer system to eliminate electrical surges
- Epoxy coated flow meter pipe with fertigation injection ports
- Individual silent wafer check valves with positive spring closure
- Gear operated discharge isolation valve
- Clayton pressure relief valve sized to accommodate constant speed operation
- All piping and structural members sand blasted for maximum paint adhesion
- High quality epoxy paint process with 4 - 6 mil applications
- Steel fabricated discharge pipe with 2" winterizing port

MODEL	USGPM	PSI	TOTAL HP	PUMPS
SLED-2VSS-200/125-10/2-3450-600/3/60	200	125	20	2
SLED-2VSS-300/125-15/2-3450-600/3/60	300	125	30	2
SLED-2VSS-400/125-20/2-3450-600/3/60	400	125	40	2
SLED-2VSS-500/125-25/2-3450-600/3/60	500	125	50	2
SLED-2VSS-600/125-30/2-3450-600/3/60	600	125	60	2
SLED-2VSS-800/125-40/2-3450-600/3/60	800	125	80	2
SLED-2VSS-1000/125-50/2-3450-600/3/60	1000	125	100	2
SLED-2VSS-1200/125-60/2-3450-600/3/60	1200	125	120	2
SLED-2VSS-1500/125-75/2-3450-600/3/60	1500	125	150	2
SLED-3VSS-2000/125-60/3-3450-600/3/60	2000	125	180	3

Flow rates and pressures can be altered based on requirements



Toll Free 1-888-222-6676 Tel (905) 469-6444 Fax (905) 825-8139  
 18-1290 Speers Road, Oakville, Ontario L6L 2X4  
[www.pumptronics.ca](http://www.pumptronics.ca)



**THE GOLF COURSE WATER MANAGEMENT SPECIALISTS**